

Orion's belt
 Ballasted Roof Mount System
 *Patent Pending



Product Detail:

Orion's Belt ballast system features a simple design, utilizing only 3 main components: ballast tray, belt, and brackets. Yet it retains the rigidity and structural integrity to provide an innovative solution to flat roof systems. With only one tool required for the installation, we can guarantee a fast and easy installation.

Features:

- Aluminum 5052
- Suitable for most commercial buildings
- Suitable for roof slope range from 0-15 degrees
- High strength-to-weight ratio
- Spacing efficiency with integrated setback adjustments
- High corrosion resistant materials allows for low lifetime maintenance and an extended product life
- Ballast only option under 5psf in most Western U.S. locations



20 Year Warranty

Twice the protection offered by competitors.



Integral Grounding

Streamlines equipment grounding.



Wind Tunnel Tested



Minimal Loading

Lightweight design reduce loading.



Rugged Construction

Strong and lightweight aluminum and stainless steel ensure durability.



Pre-Assembled

Labor saving.



Simple Assembly

Modular system adapts to most roofs.



ARA

Buy American Act Compliant



Engineer Certified

We offer complete engineering resources and pre-stamped certified letters



Orion's belt

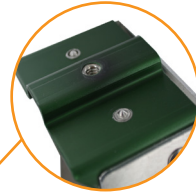
Ballasted Roof Mount System

*Patent Pending

High Bracket Detail



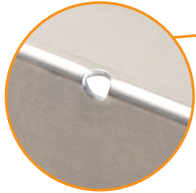
Grounding



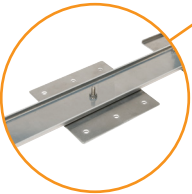
Low Bracket and Clamp Detail



Drainage Hole



Connect Belts/Seismic Plate



Rubber Pad Detail



Ballast Components



Ballast Pans

Ballast pans made from 5052 Aluminum; secure the ballast blocks to the system.



Ballast Blocks

Locally sourced Blocks reduce cost and freight for ballasting.



Roof Pads

Optional rubber pads placed under the belts to protect roof from damage.

Structural Components



Brackets

Brackets made from 5052 Aluminum provide tilt and support of the modules.



Connect Belts

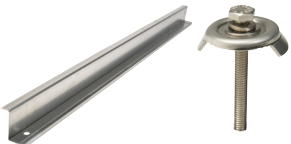
Connect belts connect each bracket to each other and add rigidity to the system as a whole.



Seismic Plates

Seismic Plates prevent lateral displacement from seismic activity.

Clamps and Wiring



Clamps

Clamps fasten to the bracket and ground adjacent modules to ballast pans.



Grounding

Grounding Lugs connect the entire system to the ground.



Accessory Mounting Plate

For micro-inverters, optimizers, etc.



Wire Management

Compatible with wire management accessories.