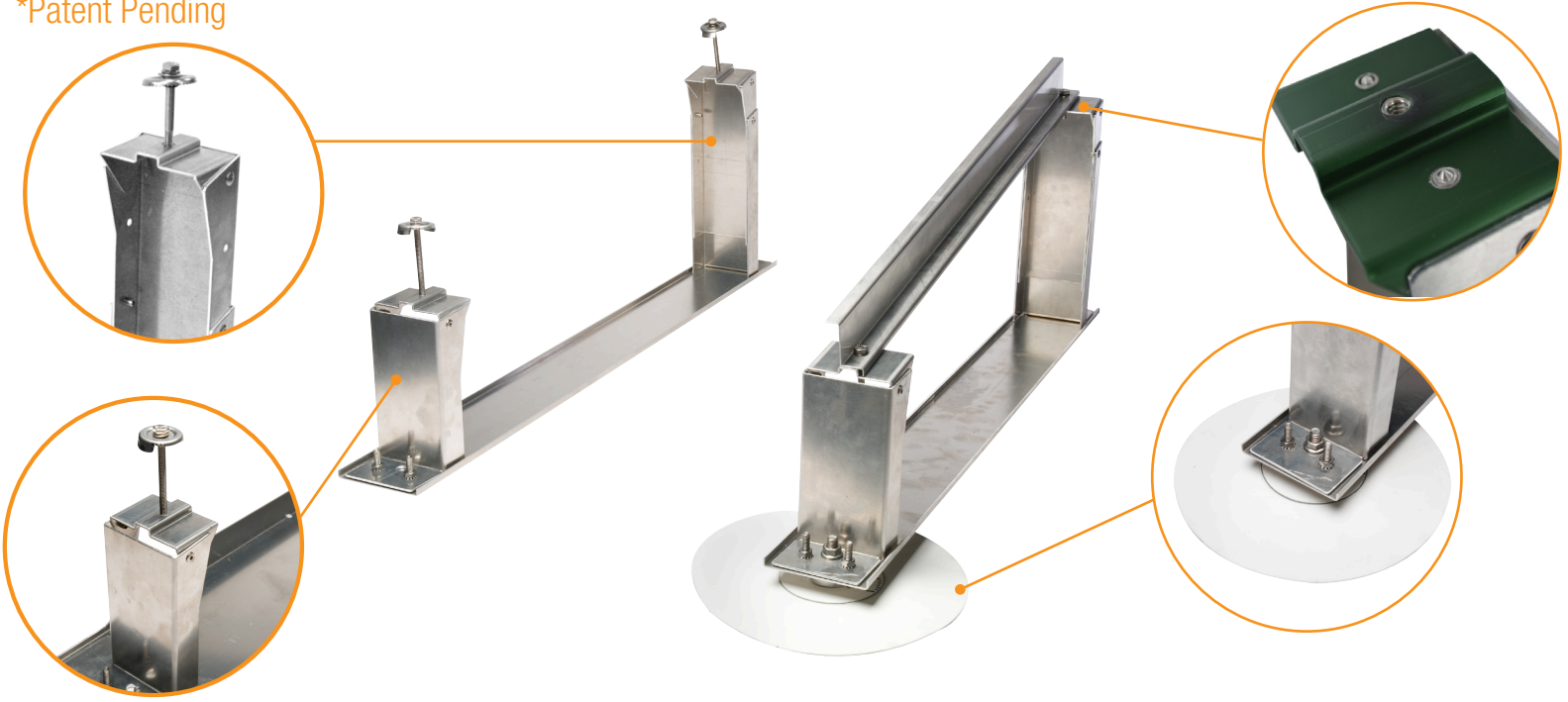


### Orion's belt

## U-Anchor Attachment System

\*Patent Pending



### Product Detail:

Orion's Belt, in conjunction with Anchor Products<sup>TM</sup>, offers a mechanically attached or non penetrating, ballast free solution. This new, lightweight technology attachment can reduce force loads exceeding 1000lbs and installs in less that 10 minutes.

### Features:

- Aluminum 5052
- Suitable for most commercial buildings
- Suitable for roof slope range from 0-15 degrees
- High strength-to-weight ratio
- Spacing efficiency with integrated setback adjustments
- High corrosion resistant materials allows for low lifetime maintenance and an extended product life



#### 20 Year Warranty

Twice the protection offered by competitors.



#### Integral Grounding

Streamlines equipment grounding.



#### Wind Tunnel Tested



#### Minimal Loading

Lightweight design reduce loading.



#### Rugged Construction

Strong and lightweight aluminum and stainless steel ensure durability.



#### Pre-Assembled

Labor saving.



#### Simple Assembly

Modular system adapts to most roofs.



#### ARA

Buy American Act Compliant



#### Engineer Certified

We offer complete engineering resources and pre-stamped certified letters



### Orion's belt

## U-Anchor Attachment System

\*Patent Pending

Orion's Belt/U-Anchor 2400 is a versatile rooftop attachment solution over single ply membrane roofs, PVC, TPO, KEE and EPDM. The U-Anchor is placed over the existing roof membrane assembly and fastened using 2 or 4 fasteners as specified. The factory sealed flashing is then hot air welded or adhered EPDM, to existing roof membrane.

### Structural Components



#### Solar Belts

Made from 5052 Aluminum; replaces ballast pan and adds rigidity.



#### Brackets

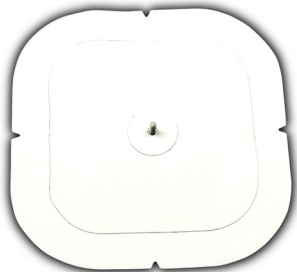
Brackets made from 5052 Aluminum provide tilt and support of the modules.



#### Connect Belts

Connect belts connect each bracket to each other and add rigidity to the system as a whole.

### U-Anchor Components



#### The U-Anchor 2000

Non-Penetrating Attachment For Fully Adhered Single Ply Membrane Applications.

- TPO
- EPDM
- PVC



#### The U-Anchor 2400

Penetrating Attachment For All Single Ply Membrane Applications.

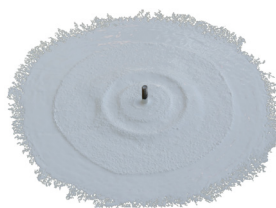
- TPO
- EPDM
- PVC



#### The U-Anchor 2600 Asphalt

Penetrating Attachment Modified Bitumen & BUR Roof Surfaces.

- Modified Bitumen
- Built Up Roofing

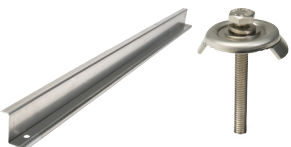


#### The U-Anchor 2600 Coating

Penetrating Attachment Coated Roof Surfaces Acrylics, SEBS, Urethanes Foam & Others.

- Coated Roof Surfaces

### Clamps and Wiring



#### Clamps

Clamps fasten to the bracket and ground adjacent modules to ballast pans.



#### Grounding

Grounding Lugs connect the entire system to the ground.



#### Accessory Mounting Plate

For micro-inverters, optimizers, etc.



#### Wire Management

Compatible with wire management accessories.