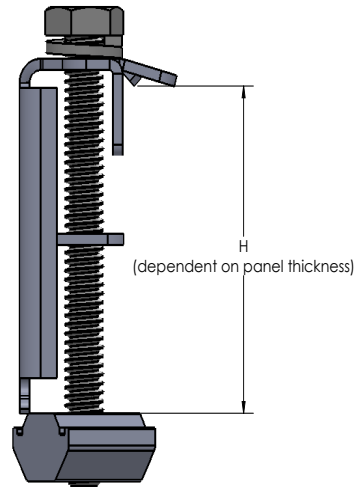
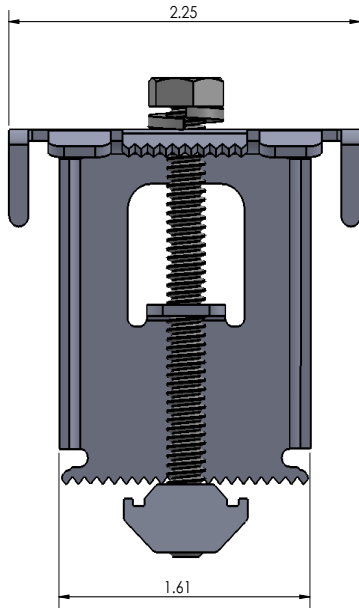


## Grounding End Clamp

|                | Part #         | Module Thickness (mm) | Finish |
|----------------|----------------|-----------------------|--------|
|                | GR-EC-G-31-CLR | 31                    | Clear  |
|                | GR-EC-G-35-CLR | 35                    |        |
|                | GR-EC-G-40-CLR | 40                    |        |
|                | GR-EC-G-45-CLR | 45                    |        |
|                | GR-EC-G-46-CLR | 46                    |        |
|                | GR-EC-G-50-CLR | 50                    |        |
|                | GR-EC-G-31-BLK | 31                    | Black  |
|                | GR-EC-G-35-BLK | 35                    |        |
|                | GR-EC-G-40-BLK | 40                    |        |
|                | GR-EC-G-45-BLK | 45                    |        |
|                | GR-EC-G-46-BLK | 46                    |        |
| GR-EC-G-50-BLK | 50             |                       |        |



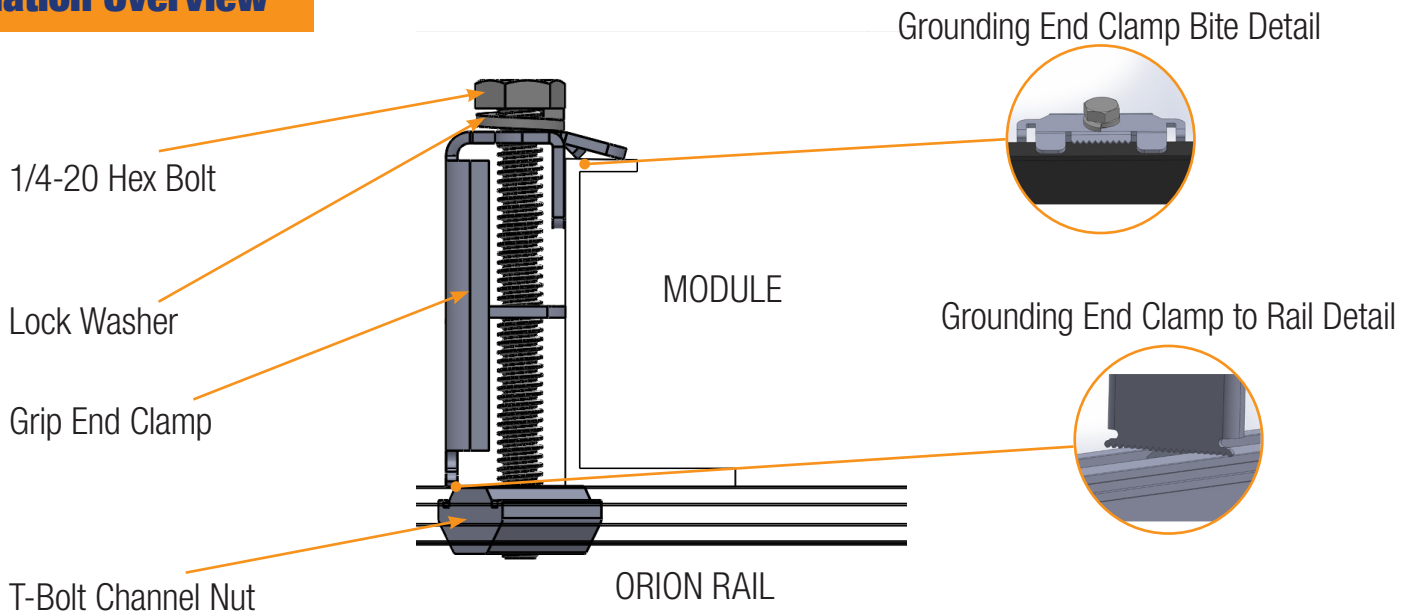
### Features:

- Weight: 0.147lb (Including Hardware)
- End Clamp Material: 300 series stainless steel
- Hardware Material: 300 series stainless steel
- Preassembled
- Integrated Grounding System
- Conforms to UL STD 2703



## Grounding End Clamp

### Installation Overview



- Place End Clamps at the end modules at suggested span per module manufacturer's specifications.
- Mount End Clamps such that End Clamps rest evenly with modules and teeth bite into module frame.
- Ensure that the channel nut "grabs" rail extrusion, and tighten hex bolt to 90in-lbs of torque.

